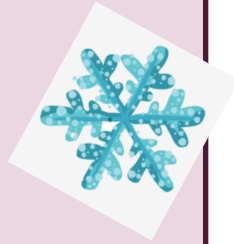


This term our learning challenge question is '**Why is it always cold in the Winter?**' This will focus our 'Understanding the World' learning on searching for signs of Winter, learning about where the animals go in winter and we will also compare Ludworth with the polar regions. With that in mind, please send children to school with appropriate clothing for the cold weather. We might be outdoors exploring most days!

Children will also explore freezing and melting and making predictions.



### Maths:

We will continue our learning with White Rose Maths and this term children will be learning about subitising, comparing numbers and representing quantities. We will count forwards to 20 and backwards from 20.

Children always enjoy solving maths problems with Numberblocks. Perhaps you could support this learning also on <https://www.learningblocks.tv/numberblocks-activities/>



## Class Newsletter - Reception



## Spring Term 1 2022

### Other Areas of Learning:

In PE, the children will become mini gymnasts! Watch as we learn how to perform a variety of jumps, rolls and balances. They will work with PE coaches every Monday morning and it is always lovely to see big smiles as the children enjoy taking part and having fun in these sessions.

Children will be using and exploring with clay to make wonderful polar or winter themed creations. I wonder what they will choose to create? I'm sure there'll be some masterpieces!



### Literacy:

Children will continue to build upon their knowledge of letter sounds in phonics each day. Using the letter sounds taught, your child will be focussing on reading words, simple sentences and will be encouraged to write words, labels and sentences.

Children will explore books and stories to help with our understanding of Winter time and to help us make links as we learn about animals that live in cold places.

